

## Editorial

We are aware that the previous two issues have been light on games (alright, none in the last issue). This issue begins to make up for that with all nine games from the National Club final successes for two Essex Clubs.

The next issue will be even better for games as it will be an "Essex at the British" special issue with, at the last count, 16 games!

## National Club Championships

### Essex National Club Double

#### Finals at Golden Lane - 12th July 2009

This year's National Club Finals provided success for two Essex Clubs: Wanstead in the Major Final and Thurrock in the U100 Plate Final, played at Golden Lane Estate, London EC1 (the London League central venue).

#### National Club Major - Final, 12th July 2009

<b>Wanstead &amp; Woodford v</b>		<b>St Albans</b>
Ian Reynolds 174 (B)	½-½	Jacek Winter 169e (W)
Ian Hunnable 172	1-0	Chris Majer 169
David Spearman 160	½-½	Jeremy Fraser-Mitchell 162
Larry Marden 160	1-0	David Bower 145
Philip Staniland 128	1-0	Ian Cross 122
<b>Ave. Grade 158.8</b>	<b>4-1</b>	<b>Ave. Grade 153.4</b>



PHOTO: BRIAN SMITH

*Rogues gallery of the winning Wanstead team (The "Angels"!), l to r: non-playing captain John Philpott (with the trophy), Ian Reynolds, Ian Hunnable, Philip Staniland, Larry Marden, David Spearman.*

Editor: Ian Hunnable  
idh@essexchess.org.uk

*Opinions expressed in this publication are not necessarily those of the Essex Chess Association. Unattributed contributions are those of the Editor.*

Wanstead were at full strength, fielding the same quintet that was successful in the semi-final away to Hastings. The only thing Wanstead lost all afternoon was the toss, so they had the majority of blacks. One of these was neutralised comfortably when Ian Reynolds took a draw by repetition.

Larry Marden had his opponent under pressure from an early stage and secured the full point to give Wanstead the lead. David Spearman in a queenless middlegame faced a passed

**National Club Championships  
2008-09**

*Acknowledgements to the SCCU  
Website for the details.*

**OPEN**

Only three entries. The teams agreed to play a single-round all-play-all league to be decided on Match Points.

	WG	Ma	Mu	MP
Wood Green	*	5	4	2
Maidstone	1	*	4	1
Mushrooms	2	2	*	0

**MAJOR**

16 entries

**Round 1**

- Bushbury 2½-2½ Gloucester\*
- Milton Keynes 3½-1½ Diss Asters
- St Albans w/o scr Brown Jack
- Tunbridge Wells scr w/o Maidstone
- Hastings 3-2 Cosham
- London Deaf ½-4½ Bourne End
- Wanstead 4-1 Metropolitan**
- Wood Green 1½-3½ Hackney

\*Progressed on tie-break

**Quarter-finals**

- Gloucester 3-2 Milton Keynes
- Bourne End ½-4½ St Albans
- Maidstone 2-3 Hastings
- Hackney 1½-3½ **Wanstead**

**Semi-finals**

- St Albans 3 2 Gloucester
- Hastings 1½-3½ **Wanstead**

**Major Final**

- Wanstead 4-1 St Albans**

**MAJOR PLATE**

**Quarter-finals**

- Diss Asters 2-3 Wood Green
- Cosham 2-3 Bushbury

Byes:

- London Deaf
- Metropolitan

**Semi-finals**

- Bushbury 4-1 London Deaf
- Wood Green 3½-1½ Metropolitan

**Major Plate Final**

- Wood Green 3-2 Bushbury

**MINOR**

16 entries

**Round 1**

- St Albans 1½-2½ Hackney

*(Continued on page 3)*

pawn, but rendered it harmless and offered the draw.

This left Philip Staniland with a comfortable positional advantage and Ian Hunnable getting back into the game after weathering an early Black initiative. Hunnable missed several winning opportunities before entering a winning R & P ending, but the match was wrapped up first by the full point on board 5. When the ECF CEO resigned board 2, Wanstead had a convincing 4-1 win.

*Games supplied by John Philpott*

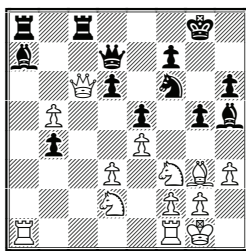
Boards 1 and 2 saw the shortest and the longest games. Ian Reynolds' game concluded with a repetition of moves, but this concealed a very interesting and complex position which both players probably did well to ignore.

**Jacek Winter – Ian Reynolds [C54]**

National Club Major Final Board 1, 12.07.2009

*Notes by Ian Hunnable*

**1.e4 e5 2.Nf3 Nc6 3.Bc4 Bc5 4.d3 d6 5.c3 a6 6.0-0 Nf6 7.Bg5 h6 8.Bh4 Bg4 9.h3 Bh5 10.Nbd2 g5 11.Bg3 Qd7 12.b4 Ba7 13.b5 Nb8 14.bxa6 b5 15.Bb3 Nxa6 16.Qc2 c5 17.a4 b4 18.Bc4 Nc7 19.cxb4 cxb4 20.Bb5 Nxb5 21.axb5 0-0 22.Qc6 Rfc8**



**23.Nxe5! Qe6 23...dxe5 24.Qxf6 is clearly winning for White. Now White constantly has two pieces en prise. 24.Qb7 Here, however, White had the Grandmaster continuation 24.b6!! Rxc6 25.Nxc6 d5 26.Rfc1 dxe4 27.Rxa7 Re8 28.Nxe4+- 24...Rcb8 24...dxe5 25.Rxa7 is a little too complex to commit to and seems to favour White. There might occur: 25...Rab8 26.Qa6 Rb6 27.Qa5 Be2 28.Qxb4 Bxf1 29.Nxf1 Nh5 30.Re7 Rxb5 31.Qxb5 Qxe7 32.Bxe5 Nf4 33.d4± which is a bit far to make decisions on at move 24! 25.Qc6 Here, White might have looked at 25.Rxa7 Rxb7 26.Rxa8+ Kh7 27.Nc6 Rxb5 28.Nd4 Qd7 29.Nxb5 Qxb5 30.Bxd6 Qxd3 31.Bxb4 Nxe4 32.Ra3 Qd4 33.Nxe4 Qxe4 34.Bc3± Again, this is way too deep. 25...Rc8 26.Qb7 Rcb8 27.Qc6 Now Ian wrote down ...Rc8 on his score sheet and claimed the draw for a threefold repetition. ½-½**

I found myself surprisingly rusty after only a few weeks without a game, and missed several clear chances before I managed to negotiate my way to a winning ending against the ECF Chief Executive:

**Ian Hunnable – Chris Majer [A31]**

National Club Major Final Board 2, 12.07.2009

*Notes by Ian Hunnable*

**1.Nf3 Nf6 2.d4 c5 3.c4 cxd4 4.Nxd4 e5 5.Nb5 d5 6.cxd5 Bc5 7.e3 0-0 8.N5c3 e4 9.Be2 Re8 10.0-0 Nbd7 11.Nd2 Nb6 12.a3(?) Preparing b4 while, I thought, maintaining a defence to the d-pawn, but this is based on a miscalculation. Best is 12 Qc2. 12...Nbx5 I thought that Black couldn't do this on account of 13 Ndxe4, but he**

*(Continued on page 3)*

(Continued from page 2)

Tunbridge Wells 1½-2½ Cosham  
**Wanstead** 2½-1½ Bedford  
 Milton Keynes scr w/o Rainham  
 Bushbury 2-2 \*Ashfield  
 Alwoodley 2½-1½ Barton on Humber  
 Lancaster 2½-1½ Newark  
 Maidstone 2-2 \*Snodland

**Quarter-finals**

Hackney 3½-½ Alwoodley  
 Cosham ½-3½ **Wanstead**  
 Snodland 2½-1½ Rainham  
 Ashfield 3-1 Lancaster

**Semi-finals**

Ashfield 1½ 2½ Hackney  
**Wanstead** 1½-2½ Snodland

**Minor Final**

Snodland 2½-1½ Hackney

**MINOR PLATE**

**Quarter-finals**

Newark beat St Albans  
 Bedford\* 2-2 Maidstone  
 Barton on Humber 1½-2½ Bushbury  
 Milton Keynes scr w/o Tunbridge Wells

**Semi-finals**

Tunbridge Wells 1-3 Bedford  
 Bushbury 1-3 Newark

**Minor Plate Final**

Bedford\* 2-2 Newark

**UNDER 100**

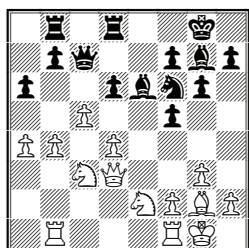
9 entries

**Round 1**

Hackney\* 2-2 Thurrock  
 Rushall w/o scr Syston  
 Chipping Campden 2-1 Forest of Dean  
 Snodland 2½-1½ Hastings  
 Bye Bushbury

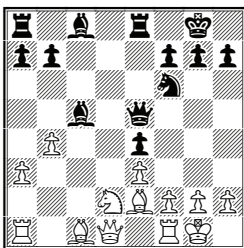
\*Progressed on tie-break

(Continued on page 4)

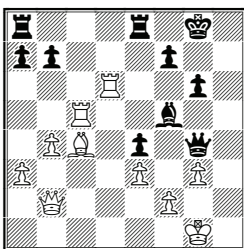


Fraser-Mitchell v Spearman  
 Position after 16...Rfd8

recaptures with the rook: 13.Ndx e4 Rxe4 14.Nxe4 Nxe4 ♯. **13.Nxd5 13...Qxd5 14.b4 Qe5?**



**15.Rb1?** I played well enough to win this game, but had trouble focusing my thoughts. Here is the first example: I looked at 15.Bb2 Qxb2 16.Nc4 Qc3 but couldn't find 17.Rc1+-. On missing this opportunity, I handed Black the initiative. **15...Bd6 16.g3 Qe6 17.Bb2 Be5 18.Qc2 Bxb2 19.Qxb2 Qh3 20.Rfd1 Ng4 21.Nf1 Bf5 22.Rd6 h5** The need to bring up reinforcements indicates Black's initiative is waning. Also inconclusive is 22...Ne5 23.Nd2 Bg4 24.Bf1 Qh5 25.Qd4 Bf3 26.Qd5= **23.Rc1 h4 24.Rc5** At this point, I felt I was back in the game with dangerous threats gathering around the Black king. **24...hgx3 25.hxg3 g6 26.Bc4 Nh6 27.Nh2 Ng4? 28.Nxg4** Here and on the next move, I missed Bxf7+ with Rc7(+) to follow. **28...Qxg4**



**29.Qf6** Here, I really should have been able to see 29.Bxf7+ Kxf7 30.Rc7+ +- **29...Be6 30.Bxe6** I looked at 30.Rg5 but once again couldn't focus on the conclusion: 30...Qf3 31.Rxg6+ fxc6 32.Qxg6+ Kh8 33.Qh6+ Kg8 34.Rxe6 Qd1+ 35.Kh2+- **30...Rxe6 31.Rxe6 Qxe6 32.Qxe6 fxe6** With the fragmented Black pawns, White must win this ending. **33.Rc7 b6 34.Re7 Rc8 35.Rxa7 Rc1+ 36.Kg2 Ra1 37.Re7 Rxa3 38.Rxe6 Kf7 39.Rxe4** Black could resign here, but plays on, more in hope than expectation, in view of the match situation. In fact, by the time this game was finished, we had already secured the match. **39...Rb3 40.f4 Rb2+ Time control. QPF. 1.56/1.58 41.Kf3 Kf6 42.Rc4 Kf7 43.e4 Rb3+ 44.Kg4 Kg7 45.f5 gxf5+ 46.exf5 Kf7 47.Kf4 Rb1 48.g4 Rb2 49.Ke5 Ke7 50.g5 Re2+ 51.Re4 Rb2 52.g6 Rg2 53.f6+ Kf8 54.Kf5 Rf2+ 55.Ke6 Rf1 56.g7+ Kg8 57.Ke7 b5 58.Re6 Rf2 59.Re5 Rf4 60.Ke6 Rf2 61.Rxb5** Alternatively, 61.Rh5 is sufficient. **61...Re2+ 62.Re5 1-0**

David Spearman weathered doubled pawns, an IQP, a Q-side four pawns attack yielding the opponent a passed pawn, before securing a draw:

**Jeremy Fraser-Mitchell – David Spearman [A45]**  
 National Club Major Final Board 3, 12.07.2009

**1.d4 Nf6 2.Bg5 g6 3.Bxf6 exf6 4.c4 f5 5.Nc3 Bg7 6.g3 0-0 7.Bg2 d6 8.e3 c5 9.Nge2 Nd7 10.0-0 a6 11.Rb1 Rb8 12.b4 cxd4 13.exd4 Nf6 14.a4 Qc7 15.Qd3 Be6 16.c5 Rfd8** Diagram **17.c6 d5 18.cxb7 Qxb7 19.Nf4 Ne4 20.Rfc1 Qb6 21.Nce2 Rdc8 22.Rxc8+ Rxc8 23.b5 axb5 24.Qxb5 Qxb5 25.axb5 Rb8 26.Bxe4 dxe4 27.Nxe6 fxe6 28.b6 Rb7 29.Rb4 Bf6 30.Nc3 Bd8 31.Na4 Kf7 32.f3 exf3**

(Continued on page 4)

(Continued from page 3)

**Quarter-final**

Rushall ½ 3½ Bushbury

**Semi-finals**

Snodland 1-3 Hackney  
Bushbury\* 2-2 Chipping Campden

**U100 Final**

Hackney 3-1 Bushbury

**U100 PLATE**

**Semi-finals**

Forest of Dean w/o scr Syston  
Hastings ½-3½ Thurrock

**U100 Plate Final**

Thurrock 3½-½ Forest of Dean

\*Progressed on tie-break

**Essex Summer Rapidplay  
Knockout 2009**

All matches two rounds  
30-30 Rapidplay

**MAIN COMPETITION**

Preliminary Round  
Brentwood 2 5-7 Thurrock

**Round 1**

Writtle	6½-5½	Upminster
Wanstead	9½-2½	Roding & L'ton
Brentwood 1	4-8	Ilford
Thurrock	4-8	Barking

**Semi-Finals**

Wanstead	6-6	Writtle*
Ilford	4-8	Barking

\*Progressed on tie-break

**Final**

Barking v Writtle  
30th September 2009 at Thurrock

**PLATE**

Preliminary Round  
Brentwood 2 0-12 Upminster

**Semi-Finals**

Thurrock	7-5	Roding & L'ton
Brentwood 1	4½-7½	Upminster

**Final**

Thurrock v Upminster  
30th September 2009 at Thurrock

The first batch of match details  
is given on p6.

33.Kf2 Ke7 34.Kxf3 g5 35.g4 Kd6 ½-½

Larry Marden was always in control of his game and wrapped up the point without allowing his opponent a sniff.

**Larry Marden – David Bower [E94]**

National Club Major Final Board 4, 12.07.2009

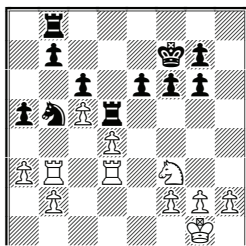
1.d4 Nf6 2.c4 g6 3.Nc3 Bg7 4.e4 d6 5.Nf3 0-0 6.Be2 e5 7.0-0 Nbd7 8.Be3 c6 9.Qc2 a6 10.Rfd1 Qe7 11.dxe5 dxe5 12.Nd2 Nc5 13.Na4 Nxa4 14.Qxa4 b5 15.Qc2 Ng4 16.Bxg4 Bxg4 17.f3 Be6 18.Nb3 Rfc8 19.Bc5 Qg5 20.Na5 f5 21.Qf2 fxe4 22.fxe4 Bf8 23.Be3 Qg4 24.Qf6 Bg7 25.Qf3 Bf8 26.c5 Rc7 27.b4 Rf7 28.Qxg4 Bxg4 29.Rd2 Bd7 30.h3 Ra7 31.Rad1 Kg7 32.Bg5 Be8 33.Rd8 Be7 34.Rxe8 Bxg5 35.Nxc6 Be3+ 36.Kh2 Rac7 37.Nd8 Rfd7 38.Rxd7+ Rxd7 39.c6 Rd2 40.c7 Rc2 41.Ne6+ 1-0

Finally, the game that yielded the winning point:

**Ian Cross – Philip Staniland [D12]**

National Club Major Final Board 5, 12.07.2009

1.d4 d5 2.e3 Bf5 3.Bd3 e6 4.Nf3 Nf6 5.0-0 Nbd7 6.c4 Bxd3 7.Qxd3 c6 8.Nc3 Bd6 9.Re1 0-0 10.c5 Bc7 11.e4 dxe4 12.Nxe4 Nxe4 13.Qxe4 Nf6 14.Qh4 Nd5 15.Qe4 Nf6 16.Qh4 Nd5 17.Qe4 Qf6 18.Bg5 Qg6 19.Qxg6 hxg6 20.a3 f6 21.Bh4 Kf7 22.Bg3 Rad8 23.Bxc7 Nxc7 24.Rad1 Rd5 25.Re3 Rfd8 26.Rb3 Rb8 27.Rdd3 a5 28.Nd2 Nb5 29.Nf3



29...a4! Securing the position of the knight on b5. 30.Rb4 Rbd8 31.Kf1 If 31.Rxa4 e5 32.Rd2 e4 33.Ne1 Nxd4 34.Ra7 R8d7 35.b4 Nb5 36.Rxd5 cxd5 37 c6 Nxa7 38 cxd7 Ke7 -+ 31...e5 32.Rd2 e4 33.Ng1 Rxd4 34.Rbxd4 Rxd4 35.Ke2 f5 36.Rc2 Rd3 37.Rc4 Rb3 38.Rxa4 Rxb2+ 39.Ke3 Rb3+ 40.Kd2 Nxa3 41.Ne2 Rd3+ 42.Kc1 Nb5 43.Kc2 Rd5 0-1.

**National Club U100 Plate - Final, 12th July 2009**

<b>Thurrock</b>	<b>v</b>	<b>Forest of Dean</b>
Mike Bradford 116 (W)	½-½	Ray Francis 111 (B)
Andrew Offord 87	1-0	Steve Rogers 110
Robin Smith 81	1-0	Ian Jenkins 69
Ron Prickett 74	1-0	Ron Buffton 60e
<i>Ave. Grade 89.5</i>	<b>3½-½</b>	<i>Ave. Grade 87.5</i>

Games supplied by John Philpott

**Mike Bradford – Ray Francis [B72]**

National Club U100 Plate Final Board 1, 12.07.2009

1.e4 c5 2.Nf3 d6 3.Nc3 Nf6 4.Be2 g6 5.d4 cxd4 6.Nxd4 Bg7 7.0-0 0-0 8.Be3 a6 9.Qd2 Qc7 10.Nf3 Nc6 11.Rfd1 b5 12.Nd5 Nxd5 13.exd5 Ne5 14.c3 Nc4 15.Bxc4 Qxc4 16.Qd3 Qxd3 17.Rxd3 Bb7 18.Re1 Rfe8 19.Nd2 Rac8 20.Bg5 Kf8 21.Be3 Kg8 22.f3 Kf8 23.Kf2 Kg8 24.Bf4 Kf8 ½-½

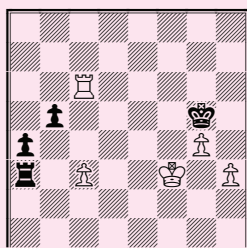
(Continued on page 5)



Thurrock rogues gallery, l to r: Ron Prickett, Mike Bradford, Robin Smith and Andrew Offord.

**Envelope diagram**  
Volume 12 Issue 1

This should not have delayed you opening the envelope for long. An easy one to get you back into the habit. Trivial enough even for one subscriber to query whether the position was correct! But did you find *both* answers?



White to play

The position comes from Lawrence Trent v James Hanley, R1 British Championships, Torquay 2009.

No doubt you found 1 Kg3 without trouble, with h4# to follow. Lawrence, on the other hand, finished with the, objectively inferior, but more elegant 1 h4+ Kxh4 2 Rc5 1-0.

Look out for the 'Essex at the British' special issue!

**Steve Rogers – Andrew Offord [A18]**

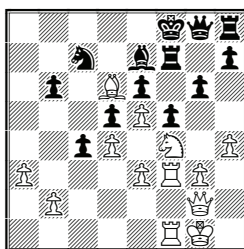
National Club U100 Plate Final Board 2, 12.07.2009

1.c4 Nf6 2.Nc3 e5 3.Nf3 Nc6 4.e4 a6 5.Bd3 Bc5 6.Bc2 d6 7.d3 Bg4 8.Be3 Nd4 9.Rg1 0-0 10.h3 Bxf3 11.gxf3 Kh8 12.f4 exf4 13.Bxf4 Qd7 14.Rh1 Rae8 15.Be3 c6 16.Bxd4 Bxd4 17.Qf3 d5 18.0-0-0 Bxc3 19.bxc3 d4 20.cxd4 Qxd4 21.Rhg1 Re6 22.a4 b5 23.axb5 axb5 24.cxb5 cxb5 25.Qg3 g6 26.Kd2?? Nxe4+ 0-1

**Robin Smith – Ian Jenkins [D35]**

National Club U100 Plate Final Board 3, 12.07.2009

1.d4 d5 2.e3 e6 3.c4 Nf6 4.Nc3 Be7 5.f4 0-0 6.Nf3 Nbd7 7.c5 c6 8.Bd3 b6 9.cxb6 axb6 10.0-0 Ba6 11.Ne5 Nxe5 12.fxe5 Bxd3 13.Qxd3 Ne8 14.Rf3 f5 15.Bd2 Nc7 16.Raf1 Qd7 17.a3 c5 18.Rh3 Rf7 19.Qe2 g6 20.Qf3 Raf8 21.Qf2 c4 22.Rf3 Kh8 23.Ne2 Bg5 24.Qg3 Qd8 25.Qf2 Kg8 26.g3 Kg7 27.h4 Be7 28.Nf4 Rh8 29.Qg2 Qg8 30.Bb4 Kf8 31.Bd6



31...Bxd6 32.exd6 Ne8?? 33.Nxe6# 1-0

**Ron Buffton – Ron Prickett [D05]**

National Club U100 Plate Final Board 4, 12.07.2009

1.d4 e6 2.e3 d5 3.Bd3 Nf6 4.Nf3 c5 5.b3 Nc6 6.a4 cxd4 7.exd4 Bd7 8.Bd2 Bd6 9.Nc3 a6 10.h3 h6 11.Rb1 Nb4 12.a5 Nxd3+ 13.cxd3 Bb4 14.Na2 Bxd2+ 15.Qxd2 0-0 16.Nc3 Qxa5 17.b4 Qd8 18.Ra1 Qe7 19.Na4 Bxa4 20.Rxa4 Rfc8 21.g4 b5 22.Ra1 Nh7 23.h4 Qc7 24.Ra3 Qc1+ 25.Qd1 Qxa3 26.Ke2 Qxb4 27.g5 Qb2+ 28.Qd2 Rc2 29.Ke3 Rxd2 30.Nxd2 a5 and Black went on to win comfortably 0-1

### Southend & District League

#### Division One

	P	W	D	L	Pts
<b>Southend I</b>	<b>10</b>	<b>7</b>	<b>2</b>	<b>1</b>	<b>16</b>
Basildon I	10	6	2	2	14
Basildon II	10	7	0	3	14
Thurrock I	10	4	1	5	9
Rayleigh I	10	2	1	7	3
Temple S I	10	0	2	8	2

#### Division Two

	P	W	D	L	Pts
<b>Thurrock II</b>	<b>10</b>	<b>6</b>	<b>3</b>	<b>1</b>	<b>15</b>
Southend II	10	6	2	2	14
Westcliff I	10	6	0	4	12
Westcliff II	10	3	3	4	9
Rayleigh II	10	3	1	6	7
Temple S II	10	1	1	8	3

#### Division Three

	P	W	D	L	Pts
<b>Basildon III</b>	<b>8</b>	<b>7</b>	<b>0</b>	<b>1</b>	<b>14</b>
Southend III	8	3	3	2	9
Thurrock III	8	4	1	3	9
Basildon IV	8	2	1	5	5
Westcliff III	8	0	3	5	1

#### Perriman Cup

##### First Round

<b>Basildon I</b>	5½-4½	Temple S II	4
1½ <b>Basildon III</b>	5-2½	Southend I	
<b>Rayleigh II</b>	5½-3½	Westcliff III	3
1 <b>Southend II</b>	3-4	<b>Westcliff I</b>	
1 <b>Temple S I</b>	3½-3½	<b>Rayleigh I*</b>	
<b>Thurrock I</b>	4-2½	Basildon II	½
<b>Thurrock III</b>	4½-2	Southend III	½
1 <b>Westcliff II</b>	4-3	Thurrock II	

\*won on bottom board elimination

##### Quarter Finals

<b>Basildon I</b>	6-4	Westcliff II	4
<b>Rayleigh I</b>	6-4	Thurrock III	4
<b>Thurrock I</b>	4-2	Rayleigh II	
<b>Westcliff I</b>	4-3	Basildon III	1

##### Semi Finals

Rayleigh I	1½-4½	<b>Thurrock I</b>
1½ Westcliff I	3½-4	<b>Basildon</b>

##### Final

Basildon I	3-4	<b>Thurrock I</b>	1
------------	-----	-------------------	---

*Perriman Cup: All matches, 6 boards. Digits to the left and right of these tables indicate handicap points applicable (based on relative gradings and always expressed in the positive). For example, in the second semi-final, the match score was 2-4, but Westcliff received a handicap of +1½ which increased their score of 2 to 3½; sadly for Westcliff, not enough to help them on this occasion.*

## Essex Summer Rapidplay Knockout

See p4 for Draw

Grades here are **OLD** basis: (r) = Rapid (s) = Standard

### Preliminary Round

Played 2nd July 2009

#### Brentwood 2

	5-7		Thurrock
	R1	R2	
John Thompson 110 (s) (W, B)	½-½	1-0	Malcolm Crane 86 (s) (B, W)
Greg McPherson -	0-1	½-½	Len Whittaker 95 (s)
David D'Cruz 79 (s)	½-½	0-1	Robin Smith 81 (s)
Russell Fisher 68 (s)	½-½	0-1	Rebecca Swestun 53 (r)
Dean Ellis 78 (s)	1-0	1-0	Andy Swestun -
Peter Hughes 39 (s)	0-1	0-1	John Ellis -
	<b>2½-3½</b>	<b>2½-3½</b>	

### Round 1

Played 15th July 2009

#### Writtle

	6½-5½		Upminster
	R1	R2	
Ivor Smith 167 (s) (W, B)	½-½	1-0	Robert Gill 167 (r) (B, W)
David Millward 165 (r)	1-0	½-½	Les Crane 161 (r)
Robin Slade 156 (r)	½-½	½-½	Andy Robertson 157 (r)
Kerry Chilvers 148 (s)	½-½	½-½	Jim Howson 154 (r)
Robert Rodie 138 (s)	½-½	1-0	Aidan Corish 147 (r)
Andrew Forrester 117 (s)	0-1	0-1	David Brock 143 (s)
	<b>3-3</b>	<b>3½-2½</b>	

#### Report by Ivor Smith

Russell White and John Moore had to withdraw at short notice due to illness which meant that Upminster, with a grading advantage, started this match as slight favourites. This was confirmed when Writtle were fortunate to escape with a R1 3-3 draw when Les Crane blundered badly in what appeared to be a winning position. More misfortune for Upminster followed in R2 when the result of the match came down to the game on Board 1. Robert Gill who had played outstandingly well in both his games managed to find the only losing move in a position where he was ahead on material and indeed on the clock. A lucky escape for Writtle.

Played 21st July 2009

#### Wanstead & Woodford

	9½-2½		Roding & Loughton
	R1	R2	
Ian Hunnable 159 (r) (W, B)	½-½	1-0	David Faulkner 144 (r) (B, W)
Mark Murrell 142 (r) (sub)	0-1	1-0	Oliver Finnegan 140 (s)
David Spearman 160 (s)	1-0	1-0	Ken Groce 129 (r)
Terry Whitton 154 (s)	1-0	1-0	Alistair Clark 113 (s)
Paul Barclay 147 (r)	0-1	1-0	John Campbell 110 (r)
Steve Gilmour 127 (r)	1-0	1-0	Simon Moth 102 (s)
	<b>3½-2½</b>	<b>6-0</b>	

#### Report by Ian Hunnable

The home side had one hiccup when Larry Marden failed to appear and Mark Murrell was put in on Board 2 as the match started. The first round gave the impression that Wanstead had a fight on their hands, despite being the higher graded side.

The second round reflected Wanstead's half time team talk when the answer to the question "what's the plan?" was "must do better".